

# 02 Wheel Accessories & Hitch Covers

## Valve Extender

Enjoy easy access to your hard to reach front and rear valve stems. 45 and 90 degree nickel plated brass valve extenders are angled to lengthen your front wheel valves. They extend your standard valves almost 2". Includes 2 extenders and 2 caps per pack.



### Front Wheel, For Aluminum And Steel Wheels -- 45 and 90 Degree



- |                |                         |         |
|----------------|-------------------------|---------|
| 02026 (AG45C)  | 2 pk 45° Valve Extender | \$13.99 |
| 02002 (802990) | 2 pk 90° Valve Extender | \$11.99 |

**WHEEL MASTERS**  
America's Leader in Wheel Cover Systems and Tire Accessories

## Valve Extender

The 135 and 180 degree nickel plated brass valve extenders are angled to reserve your outer dual tire valves through the opening in the wheel for easy access. Includes 2 extenders and 2 caps per pack.



### For Outer Dual Wheel 135 and 180 Degree



**WHEEL MASTERS**  
America's Leader in Wheel Cover Systems and Tire Accessories

- |                 |                          |          |
|-----------------|--------------------------|----------|
| 02001 (8029135) | 2 pk 135° Valve Extender | \$11.99  |
| 02057 (8029180) | 2 pk 180° Valve Extender | \$20.69. |

## Rubber Valve Extender

Constructed of high quality two ply rubber tubing reinforced with a tough nylon braid.



**WHEEL MASTERS**  
America's Leader in Wheel Cover Systems and Tire Accessories

- |                 |                            |         |
|-----------------|----------------------------|---------|
| 02051 (9017)    | 1 pk 7" Straight Extender  | \$12.99 |
| 02052 (9016)    | 1 pk 13" Straight Extender | \$11.55 |
| 02053 (9015)    | 1 pk 9.5" with 90° Bend    | \$12.49 |
| 02054 (901535)  | 1 pk 10" with 135° Bend    | \$16.99 |
| 02075 (8029180) | 4 pk Retaining Nuts        | \$2.99  |

## Stainless Steel Valve Extender

Easy to install. Braided stainless withstands the elements and road hazards.



**WHEEL MASTERS**  
America's Leader in Wheel Cover Systems and Tire Accessories

- |                 |                            |         |
|-----------------|----------------------------|---------|
| 02017 (9014)    | 1 pk 7" Straight Extender  | \$16.19 |
| 02020 (9020)    | 1 pk 13" Straight Extender | \$20.79 |
| 02019 (9019)    | 1 pk 15" Straight Extender | \$22.89 |
| 02018 (9018)    | 1 pk 10.5" with 90° Bend   | \$22.59 |
| 02021 (902135)  | 1 pk 9.5" with 135° Bend   | \$22.69 |
| 02075 (8029180) | 4 pk Retaining Nuts        | \$2.99  |

## Wheel Masters Fast Fill Dual Tire Inflator

**WHEEL MASTERS**  
America's Leader in Wheel Cover Systems and Tire Accessories



The "Fast Fill Dual Tire Inflator" helps to improve tire life and mileage by maintaining correct tire pressure. The "Tire Inflators" are constructed of two-ply rubber with nylon braiding for more durability. Kits include: hoses, mounting brackets, retaining nuts and valve caps. Tire size 16" to 19".

- |                 |                                    |         |
|-----------------|------------------------------------|---------|
| 02031 (8003)    | 4 pk 12.5" & 14" Tire Inflator Kit | \$51.99 |
| 02032 (8006)    | 2 pk 13" Tire Inflator Kit         | \$26.99 |
| 02065 (8007)    | 1 pk 7" Tire Inflator Kit          | \$24.49 |
| 02075 (8029180) | 4 pk Retaining Nuts                | \$2.99  |

## Wheel Masters Stainless Steel Valve Extender

**WHEEL MASTERS**  
America's Leader in Wheel Cover Systems and Tire Accessories



Improve your mileage and increase the life of your tires by checking and inflating duals properly. Air Masters are easily attached to your existing valve stems so you can inflate and monitor your tires in seconds. They are tough enough to stand up to the elements. Kits include: hoses, retaining nuts, valve caps and mounting brackets. Tire size 16" to 19".

- |                 |                                   |         |
|-----------------|-----------------------------------|---------|
| 02028 (8001)    | 4 pk 10" & 13" Valve Extender Kit | \$67.99 |
| 02029 (8002)    | 2 pk 13" Valve Extender Kit       | \$39.99 |
| 02030 (8009)    | 2 pk 7" Valve Extender Kit        | \$35.99 |
| 02075 (8029180) | 4 pk Retaining Nuts               | \$2.99  |

# 02 Wheel & Accessories & Hitch Covers



## Hub Mount Airless Inflators

Airless tire inflators contain zero internal pressure so they can't leak even if cut or damaged. The interior of hose contains no air unless the adjustable core actuator within the hose is engaged when checking and inflating tires.

**WHEEL MASTERS**  
America's Leader in Wheel Cover Systems and Tire Accessories

02038 (80022) 2 Hose Kit For 16"-19.5" Inner Dual \$43.99



## Wheel Cover Mount Airless Inflators

Airless tire inflators contain zero internal pressure so they can't leak even if cut or damaged. The interior of hose contains no air unless the adjustable core actuator within the hose is engaged when checking and inflating tires.

**WHEEL MASTERS**  
America's Leader in Wheel Cover Systems and Tire Accessories

02040 (82082) 4 Hose Kit For 16"-19.5" \$89.99

## 2" Straight Valve Extenders

Enjoy easy access to your hard to reach front and rear valve stems. Includes 2 extenders and 2 caps per pack.



**WHEEL MASTERS**  
America's Leader in Wheel Cover Systems and Tire Accessories

02039 (80292) 1 pk (2) Valve Extenders w/Caps \$14.49

## Chrome Valve Extension Caps



A-Z RV PRODUCTS

02005 (02005) 4 pk 3/4" Caps \$3.99  
02006 (02006) 4 pk 1-1/4" Caps \$4.99



## Stainless Steel Hand Hole Mounting Bracket

**WHEEL MASTERS**  
America's Leader in Wheel Cover Systems and Tire Accessories

02024 (9037) 1 pk Mounting Bracket \$3.29



## Chrome Valve Extension Caps

A-Z RV PRODUCTS

02007 (02007) 6 pk Chrome Caps \$3.99  
02076 (02076) 6 pk Plain Caps \$1.99

## Elbow Bracket With Rivets



A-Z RV PRODUCTS

02022 (02022) 1 pk Elbow Bracket w/Rivets \$3.49

## Flat Axle Bracket



**WHEEL MASTERS**  
America's Leader in Wheel Cover Systems and Tire Accessories

02027 (9025) 1 pk Flat Axle Bracket \$3.39

# 02 Wheel Accessories & Hitch Covers



**Stainless Steel Wheel Rim Mount Bracket**

**WHEEL MASTERS**  
America's Leader in Wheel Cover Systems and Tire Accessories

02023 (9032) 1 pk Wheel/Rim Mount Bracket \$3.69



**Stainless Steel Pinch Clip Bracket**

**WHEEL MASTERS**  
America's Leader in Wheel Cover Systems and Tire Accessories

02025 (9045) 1 pk Pinch Clip Bracket \$3.95



**Valve Stem Extensions**

Make tire inflation easier. Especially useful with difficult-to-reach dual tires.

**CAMICO**

04835 (44903) Inner Dual Tire Inflator, Stainless Steel, 16"–19" Tire Size—Hub Mount 2-Pk \$27.99

04838 (44913) Dual Tire Inflators, Stainless Steel, 22" and up Tire Size—Hub Mount 2-Pk \$45.99

04837 (44923) Dual Tire Inflators, Stainless Steel, 22" and up Tire Size—Aluminum Hub Mount 2-Pk \$45.99

04831 (44933) Stainless Steel Valve Stem Extenders — Hand Hole Mount for Inner Dual Tires 2-Pk \$19.99

04836 (44943) Rubber Valve Stem Extenders—Hand Hole Mount for Inner Dual Tires 2-Pk \$18.79



**Valve Stem End Caps**

Fits any standard tire valve or extender.

**CAMICO**



04833 (44953) 6-Pk \$3.99



**Valve Stem Extensions - 135 Degree**

Fits any standard tire valve.

**CAMICO**

04832 (44973) 2-Pk \$13.29

**Valve Stem Extensions - 45 Degree**

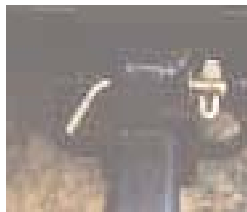
Fits any standard tire valve.

04834 (44963) 2-Pk \$8.79

**CAMICO**



# 02 Wheel Accessories & Hitch Covers



## Permanent Hitch Pin

The chromatic plated steel pin is rust and corrosion resistant for a long lasting life. Our original design swivel security clip is spring loaded for a firm fit. Easy to use, simply insert the pin in the hitch, turn the swivel clip and push until you hear or feel the spring set in place. No more lost or stolen pin clips to worry about.



- |       |         |                            |        |
|-------|---------|----------------------------|--------|
| 02093 | (01084) | 1 pk 1/2" Hitch Pin w/Clip | \$4.89 |
| 02094 | (01034) | 1 pk 5/8" Hitch Pin w/Clip | \$9.99 |

## Hitch Pin Clips

Pin Clip made of steel bright zinc plated for protection against rust. 2/card



- |       |         |                               |        |
|-------|---------|-------------------------------|--------|
| 02097 | (01134) | 2 pk Clips for 1/2" Hitch Pin | \$2.19 |
| 02098 | (01014) | 2 pk Clips for 5/8" Hitch Pin | \$2.59 |

## Sway Control Replacement Pins



Pins made of spring steel w/zinc plating for protection against rust.



- |       |         |                        |        |
|-------|---------|------------------------|--------|
| 02101 | (01004) | 2 pk Sway Control Pins | \$2.79 |
|-------|---------|------------------------|--------|

## Small Coupler Lock Pin

1/4" diameter with 1-3/8" usable length.



- |       |         |                             |        |
|-------|---------|-----------------------------|--------|
| 02103 | (01094) | 1 pk Small Coupler Lock Pin | \$3.14 |
|-------|---------|-----------------------------|--------|

## "S"-Hooks



Made of high carbon quality steel to assure a secure hookup to your trailer. Replaces any S-Hook on safety chains 3/8" or smaller.



- |       |         |                |        |
|-------|---------|----------------|--------|
| 02105 | (01154) | 2 pk "S"-Hooks | \$7.99 |
|-------|---------|----------------|--------|



## Hitch Pin

A replacement towing hitch pin made of chromatic plated steel. Rust and corrosion resistant. For use in any Class 1, 2, and 3 style hitches. Angled for easy grip when installing or removing pin from hitch.

- |       |         |                                      |        |
|-------|---------|--------------------------------------|--------|
| 02095 | (01124) | 1 pk 1/2" Pin (2-3/8" usable length) | \$3.79 |
| 02096 | (01024) | 1 pk 5/8" Pin (2-7/8" usable length) | \$3.89 |

## Hitch Pin Combo

Pull pin made of steel with zinc chromate plating for rust protection. Pins made of spring steel bright zinc plated for protection against rust.



- |       |         |                           |        |
|-------|---------|---------------------------|--------|
| 02099 | (01144) | 1 pk 1/2" Hitch Pin Combo | \$5.49 |
| 02100 | (01074) | 1 pk 5/8" Hitch Pin Combo | \$5.59 |

## Weight Distribution Replacement Pins



Replacement pins for weight distribution hitches. Bright zinc plated.

- |       |         |                               |        |
|-------|---------|-------------------------------|--------|
| 02102 | (01044) | 2 pk Weight Distribution Pins | \$2.39 |
|-------|---------|-------------------------------|--------|

## Large Coupler Lock Pin

5/16" diameter with 2-1/2" usable length.



- |       |         |                             |        |
|-------|---------|-----------------------------|--------|
| 02104 | (01054) | 1 pk Large Coupler Lock Pin | \$2.99 |
|-------|---------|-----------------------------|--------|

## Small Coupler Lock Pin With Pin Saver



Never loose another coupler lock pin with this specially designed replacement. We've added a security chain that fastens to your coupler. By using our pin saver chain your coupler pin will always be there when you need it.



- |       |         |                                      |        |
|-------|---------|--------------------------------------|--------|
| 02106 | (01174) | 1 pk Small 1/4" Pin (1-38" usable)   | \$4.79 |
| 02107 | (01184) | 1 pk Large 5/16" Pin (2-1/2" usable) | \$4.79 |

# 02 Wheel Accessories & Hitch Covers



**Elk**  
02060 (WP204C) 1 pk \$21.99



**King Salmon**  
02073 (WP212C) 1 pk \$21.99



**Rainbow Trout**  
02070 (WP104C) 1 pk \$21.99



**Blue Marlin**  
02033 (WP101C) 1 pk \$21.99



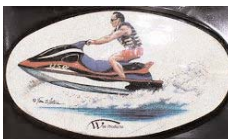
**Tuna**  
02034 (WP102C) 1 pk \$21.99



**Sailfish**  
02061 (WP207C) 1 pk \$21.99



**Shark**  
02062 (WP099C) 1 pk \$21.99



**Jet Skier**  
02063 (WP111C) 1 pk \$21.99



**Water Skier**  
02064 (WP109C) 1 pk \$21.99

## Reflective Custom Hitch Covers

### Powder Coated Finish Fits 2" Receivers

Choose from over a dozen unique cover designs, each hand drawn in meticulous detail by famed graphic artist, Tom Waters. Our hitch covers are made of high quality American-made steel and treated with an electrostatic powder-coated corrosion resistant glossy finish. Designed to fit all 2" standard receivers, our hitch covers include a custom designed neoprene gasket that is "rattle free" to ensure against road vibration. All graphics are protected by a clear UV laminate to provide years of weather-resistant enjoyment.



**Rebel Flag**  
02072 (WP210C) 1 pk \$21.99



**U.S. Flag**  
02068 (WP222C) 1 pk \$21.99



**Eagle**  
02069 (WP220C) 1 pk \$21.99



**Air Force**  
02080 (WP224C) 1 pk \$21.99



**Navy**  
02119 (WP223C) 1 pk \$21.99



**Marines**  
02120 (WP225C) 1 pk \$21.99



**Army**  
02121 (WP222C) 1 pk \$21.99



**4 x 4 Off Road**  
02122 (WP108) 1 pk \$21.99



**Wake Boarder**  
02071 (WP110C) 1 pk \$21.99

02 Wheel Accessories & Hitch Covers

02 Wheel Accessories & Hitch Covers

# 02 Wheel Accessories & Hitch Covers



## Locking Hitch Pin

Our locking hitch pin provides security for your trailer, boat or other towing equipment. Two sizes are available to fit most hitches. Our 5/8" diameter pin is used on 2" receivers while the 1/2" diameter pin is used on 1-1/4" receivers. Locking hitch pin is made of chrome plated steel and comes with protective cover and two keys.

- 02055 (18-2012) 1 pk 1/2" Locking Hitch Pin \$15.19
- 02056 (18-2058) 1 pk 5/8" Locking Hitch Pin \$15.49

## Casters

Skid wheels help to prevent under carriage damage from tail dragging. Replacement wheels come with bearing, bushing, sleeve and dust seals. The "Quick Change Caster Pad" welds to the frame and has a removable heavy duty bolt securing the caster in place. To remove the caster, simply remove the bolt, which eliminates time consuming changes.



- 02008 1 (not pkg) 6"x2" Caster w/Wheel \$20.99
- 02009 1 (not pkg) 6"x2" Wheel \$12.99
- 02011 1 (not pkg) 5"x2" Caster w/Wheel \$20.89
- 02012 1 (not pkg) 5"x2" Wheel \$12.89
- 02014 1 pk Pad for 4"x 4-1/4" Top Plate \$6.89



## Chrome Hitch Cover

- 02016 (ST300) 1 (not pkg) 2" Chrome Hitch Cover \$13.99



## NOW LEVELING YOUR RV IS EVEN EASIER!

You'll hit the top of the stack every time with the new LYNX STOP 'N CHOCK™

Place the LYNX STOP 'N CHOCK™ on the stack of LYNX LEVELERS™. Butt the stack up to the wheels... slowly idle your RV to the top of the stack until you Stop... 'n Chock. It's that easy!

## Wheel Chock



Stop unwanted trailer movement and keep your vehicle from rolling away with sturdy wheel chocks. They keep your trailer in place so you can re-hitch easily. Durable hard plastic with UV inhibitor.



- 02058 (44432) 1 (not packaged) Yellow Chock \$4.49

## Super Wheel Chock

Keep your vehicle and trailer from moving. Keep your trailer in place and re-hitch in confidence. Solidly constructed of durable polypropylene with UV inhibitors.



- 02091(44622)1 (not pkg) Super Wheel Chock \$10.99

## Tri-Leveler

Raise your RV up to 3-7/8" on any tire for more level position. Lightweight durable resin has a non-slip surface. Each tri-level has a load capacity of 3500 lbs.



- 12021 (44573) 1 (not packaged) Tri-Leveler \$22.49

## Wheel Stop

Stabilize your trailer with a single piece of equipment. Secure tandem tires to prevent movement while parking or hitching.



- 12022 (44622) 1 pk Yellow Wheel Stop \$31.99



- 02085 (15) 10 pk Lynx RV Levelers Kit \$46.99
- 02086 (16) 4 pk Lynx RV Levelers \$19.99
- 02087 (18) 1 (not pkg) Lynx Stop'n Chock \$18.59
- 02088 (182PK) 2 pk Lynx Stop'n Chock \$31.89